



Insight News

Growing Human Potential One Worldview at a Time



Jason and Al being interviewed at Northside Christian Church's Mission Day Sunday March 25th

Mailing Address
PO Box 2937,
Mills, WY 82644



Insight Resources
International, Inc.

Copyright © 2015

Nichol's Notes

Greetings brothers and sisters in Christ! I spent the last week of February at the annual Alaska Statewide Special Education Conference in Anchorage, AK. I had the pleasure of working with Al's daughter, Annette, on a presentation that focused on addressing trauma experienced by Special Educational Needs (SEN) students. Our presentation was very successful. We had about half a room the first day, which is what we expected, as we were new speakers. The second day we had double the number of attendees, as many of the attendees from our first session told their friends. The classes were excited and engaged with the subject, and everyone seemed to both enjoy and appreciate our coverage of the material. We are planning to return next year and continue to contribute to educational development in Alaskan schools. Thanks to everyone who has supported us through their prayers—this was a fantastic trip!

Jason

Mozambique Relief Effort

In the last week, Mozambique has been hit by a massive typhoon. The number of confirmed deaths is still small, but estimates place the projected death toll at over 1000, with over 100,000 people being directly affected by the storm. Based on reports we have received from our Mozambique office, the damage to agriculture and infrastructure will have devastating long-term effects on the people in the region. Most of the crops across central Mozambique have been lost. Roadways are flooded and some may be completely washed out. Power is down, and we recently lost contact with our office entirely.

In response to this devastating event, IRI is organizing relief efforts for Mozambique. Once we have reestablished contact with our office, we want to coordinate with the Mozambicans to provide emergency food, supplies, and services to the region. With the loss of crops, people will need to be fed. Houses will need repairs before they are livable again (before we lost contact, we already had reports from Leonard about how he was using houses on his farms as emergency shelters for peo-



Mission Activities

Jason is delaying his returns to Alaska for the late May trip to work with the school system and village elders in Elim so that we can redirect travel funds to relief effort in Moz. Al and (hopefully Velma) go to South Africa for 2-3 weeks in mid-May then continue on to Moz where Al plans to be there through the summer and Velma works with several women in northern Moz for a week before returning to the USA.



Coveting your prayers and thanking you for your support

Shopping on line? Your shopping can benefit IRI. 2 ways to help.....

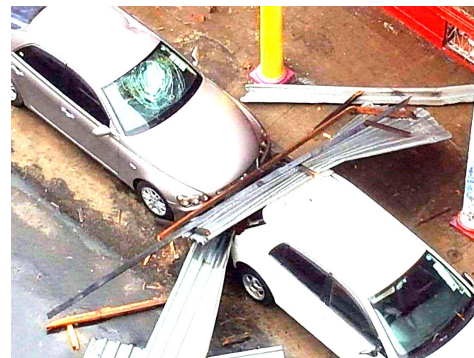
- Raise money for Insight Resources International just by searching the Internet with GoodSearch.com (powered by Yahoo), or shopping online with GoodShop.com.
- AmazonSmile just pick Insight Resources International.

Looking for other ways to donate? You can now donate online at : Insightagentsof-change.com

Insight Resources International
PO Box 2937
Mills, WY 82644

ple who lost their homes in the storm). People will need clothes, tools, and other supplies in order to start their path to recovery. We are asking everyone—old and new supporters, as well as anyone else interested—to help us with these relief efforts. Your donations will provide relief and recovery for thousands of Mozambicans. If you can, please help us. Any amount is greatly appreciated.

Below are several pictures of storm devastation in the Chimoio area sent by Leonard.





Please pray some of Leo's corn crop can be salvaged



Leo's back yard



Roof repair beginning on Leo's home/office



Leo giving comfort to a family who lost their home during the storm

IRI EMERGENCY NEEDS

News Flash Update: Due to the disaster in Mozambique, Leonard and IRI are looking at, given the most conservative estimates, a minimum loss of \$40,000 USD. The losses include major damage to 3 houses in Selva that workers and refugees were living in and 1 house in Chimoio that Leonard and Al rent. (In Mozambique renters pay for property damage even if caused by a cyclone.) This loss also includes the loss of Leonard's crops, corn, beans, and peanuts. There is no house or crop insurance in Mozambique. The damage of the houses is bad, but the loss of the crops is devastating as these crops pay for most of Leonard's salary and all his ministry and the discipling of many Mozambique nationals and an outreach into the surrounding countries. The actual losses could be far higher due to the magnitude of the damage to Leonard's fruit orchards and banana plantation, which cannot be quickly replaced regardless of available funds. Since the cyclone, with his limited funds, Leonard has started repairs on the houses and has even started to build another shelter in Selva for a family that lost everything in the cyclone. He has also planted beans in place of the lost corn to help feed those that lost their own gardens in the cyclone. The degree of loss in Mozambique cannot be overstated. Funds are needed to continue the work. Please pray about the need and help with any amount you can.



- ☑ Please pray for Al and Velma's health as they continue to work in His kingdom.
- ☑ Leo has been contacted by officials of the Zimbabwe government with interest in IRI and ABC thinking. Prayer is needed for Leo and this opportunity.
- ☑ Velma is raising funds to travel with Al to South Africa and Moz. Estimated travel cost and expenses is \$6000
- ☑ Jason's contacts and continued relationship with Johnson Bible College School of Missions.
- ☑ Jason's work with the village of Elim, Alaska and school system in late May

Get our Newsletter via Email

To get our newsletter via email please email info@insightagentsofchange.com with your information.

The newsletters is mailed from irinew12@gmail.com Please put this in your approved list. **Please notify us of any address changes so you do not miss receiving our newsletters.**

Prayer Partners

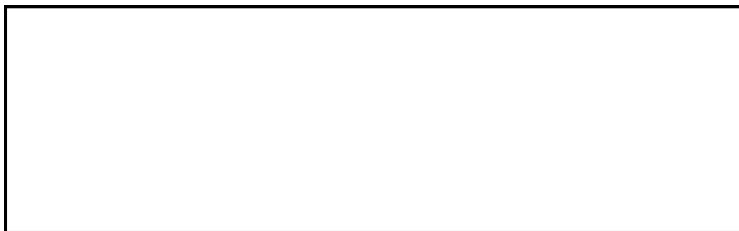


These are just a few of the items along with the tractor and attachments waiting to be sent to Moz. Please be prayerful concerning this need.

The greatest thing that you can do for Insight Resources International is to actively pray. We believe that Prayer is the cornerstone of this ministry and without it we cannot stand against Satan's attacks.

Growing Human Potential One Worldview at a Time

- Contact Us:** I.R.I. Office: (307)-277-4639 Email: info@insightagentsofchange.com
- President & Insight Seminars:
Jason Nichols (307)269-0145 Email: jason.nichols@insightagentsofchange.com
 - I.R.I Vice-President: **Al Corson** Email: al@insightagentsofchange.com
 - I..R.I. Secretary: **Velma Corson** (307)277-4639 Email: alandvel@insightagentsofchange.com



Non Profit Organization
 US Postage Paid
 Permit #10
 Mills, WY 82644
 Return Service

Insight Resources
 International, Inc.
 PO Box 2937
 Mills, WY 82644

